

Omega Design's

INTELLI-PAC™

Semi-Auto Serialized Case Aggregation System

Semi-Auto Intelli-Pac is the premier end-of-line case packing and aggregation solution. This secure, efficient workflow involves a manual packing operation combined with semi-automatic technologies to form, label, inspect, and seal a case.

HIGHLIGHTS

- 'Pack first, then inspect' operation designed for high integrity aggregation
- Ready to integrate with serialization data management software and vision providers
- Fail-safe programming

STANDARD FEATURES

- Integrated semi-auto case former and case taper
- Domino corner wrap case labeler with Zebra printer
- Overhead layer inspection camera bracket
- Touch screen to interface with machine operation
- Split voltage enclosure supports NFPA 70E

OPTIONS

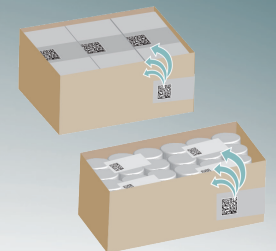
- Infeed conveyor with optional compression relief
- Additional level of aggregation (unit-to-bundle) featuring Omega's PackSync technology



Model Shown:
IPFCS

www.OmegaDesign.com

Tel: 1-610-363-6555



OMEGA
DESIGN CORPORATION

UTILITIES:

- Voltage: 120 VAC / 60 Hz
- Air: 1.5 SCFM @ 80 psig
- Utilities may vary per client specifications

PRODUCT:

- Bottles or cartons
- Loose or bundled

CONSTRUCTION:

- Stainless steel and anodized aluminum construction
- Casters with leveling legs
- Allen-Bradley CompactLogix PLC

CASE:

- Single or multiple layers
- Max: 600mm (23.6in) x 350mm (13.8in) x 533mm (21in)
- Min: 152mm (6in) x 102mm (4in) x 95mm (3.7in)

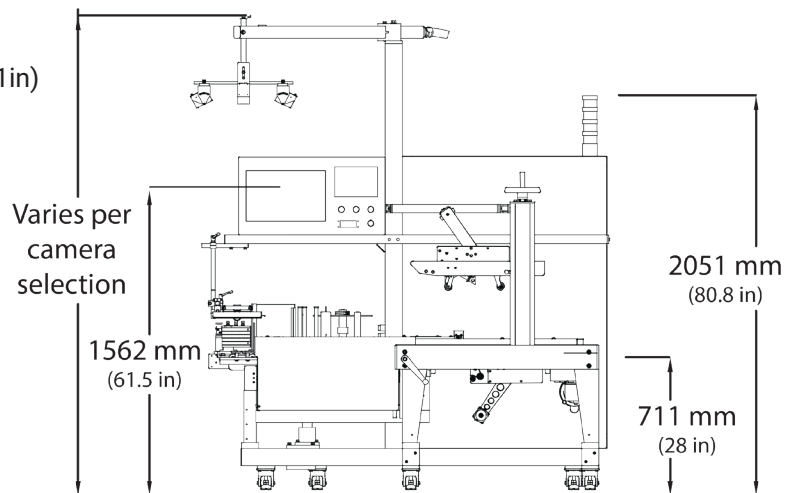
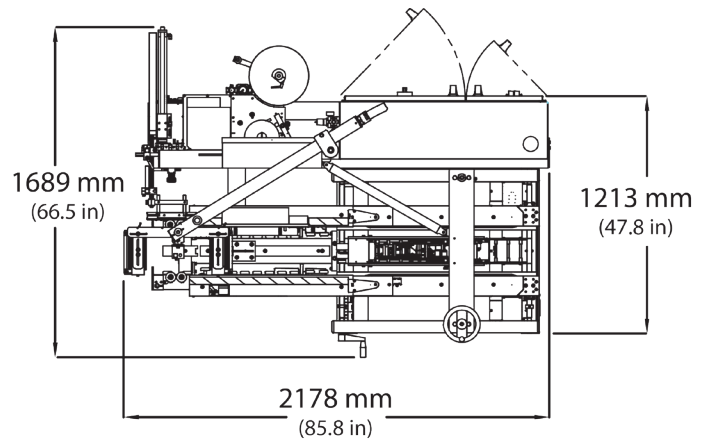
CASE LABEL:

Corner Wrap Label:

- Max: 102mm (4in) x 254mm (10in)
- Min: 51mm (2in) x 254mm (10in)

Single Side Label:

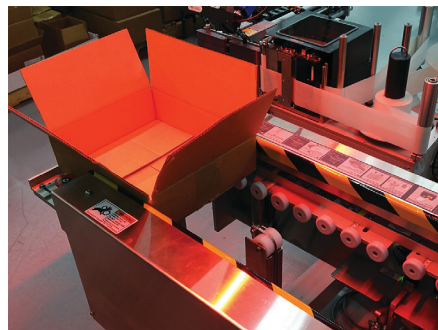
- Max: 102mm (4in) x 127mm (5in)
- Min: 51mm (2in) x 127mm (5in)



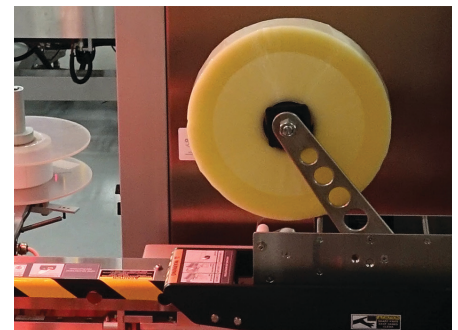
Corner wrap labeling



Case former



Exit of case through taper



Reminder Ask about our excellent track record of on-time deliveries and industry-leading FATs. Better yet, read what our clients have to say: www.omegadesign.com/testimonials