

Omega Design's

Cyclone

Bottle Unscrambler with Vertical Sorting

This Low Cost, Ultra Compact Solution is a Breeze to Operate.



- Speeds up to 120 bottles per minute*
- 5-minute, repeatable changeover
- Save floor space with built-in hopper
- Easy to operate and maintain.
- Fully automatic operation

120

Bottles per minute



Changeover



Vertical Sorting



2" - 8"

Ideal applications: round bottles, square bottles, tubes

** Speed and changeover will vary per customer's application and options selected.*

★★★★★
MADE IN THE USA

Since 1969

www.omegadesign.com

Tel: 1 (610) 363-6555

OMEGA
DESIGN CORPORATION

Cyclone

Bottle Unscrambler

Our Value Promise
www.omegadesign.com/value



OMEGA'S

IMPACT Series

OF PACKAGING EQUIPMENT

- Low cost machine configurations
- Save 20-40% on this machine
- Get faster lead times (6-10 weeks)

UTILITIES:

- Voltage: 120/208/240 VAC, 50/60 Hz
- Air: 15 SCFM @ 80 psig
- Utilities may vary per client specifications

CONTROLS:

- Allen Bradley PLC
- AC Induction motor
- Analog speed controls

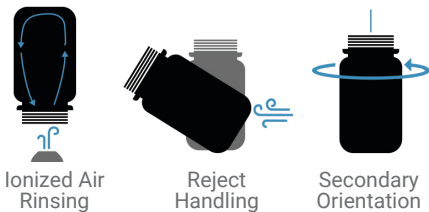
SPEED:

- Up to 120 bottles per minute

STANDARD FEATURES:

- Built-in hopper (15 cu.ft.)
- Leveling legs
- High efficiency air nozzles
- Electrical safety Interlocks
- Steel frame with painted protective coating

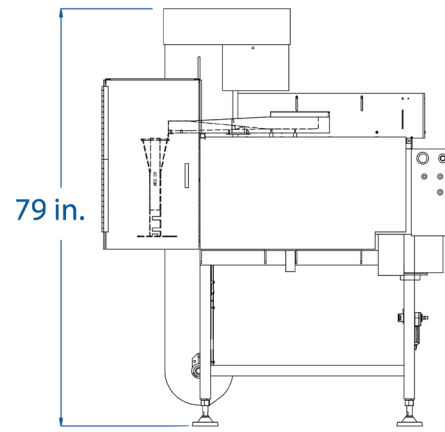
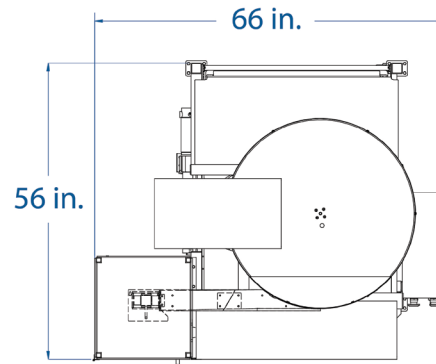
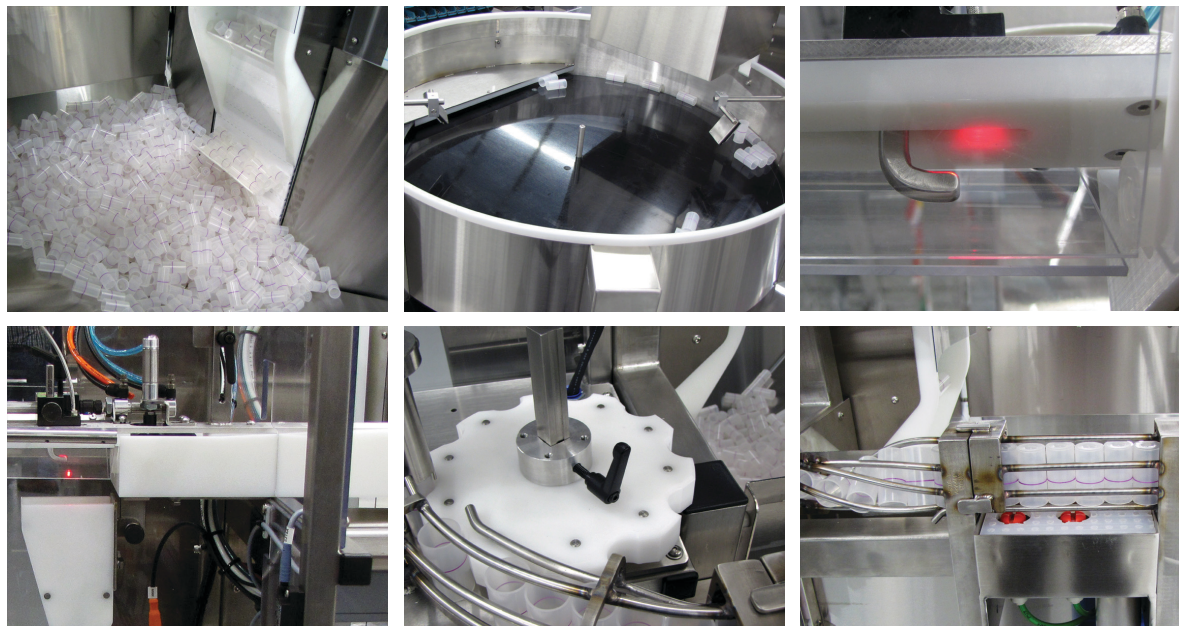
OPTIONS:



- Casters
- Discharge conveyor
- Down bottle reject system
- Validation support documentation

OPERATION:

An operator side loads empty bottles into the built-in hopper. An elevator transports the bottles to the disc sorter. Bottles exit through a horizontal channel towards a dispensing chute. A mechanical pin indexes, as needed, to ensure each bottle exits in an upright position. A starwheel at the base of the chute discharges bottles onto a conveyor.



** Layout and dimensions may vary per application.*

Reminder Ask about our excellent track record of on-time deliveries and industry-leading FATs. Better yet, read what our clients have to say: www.omegadesign.com/testimonials

